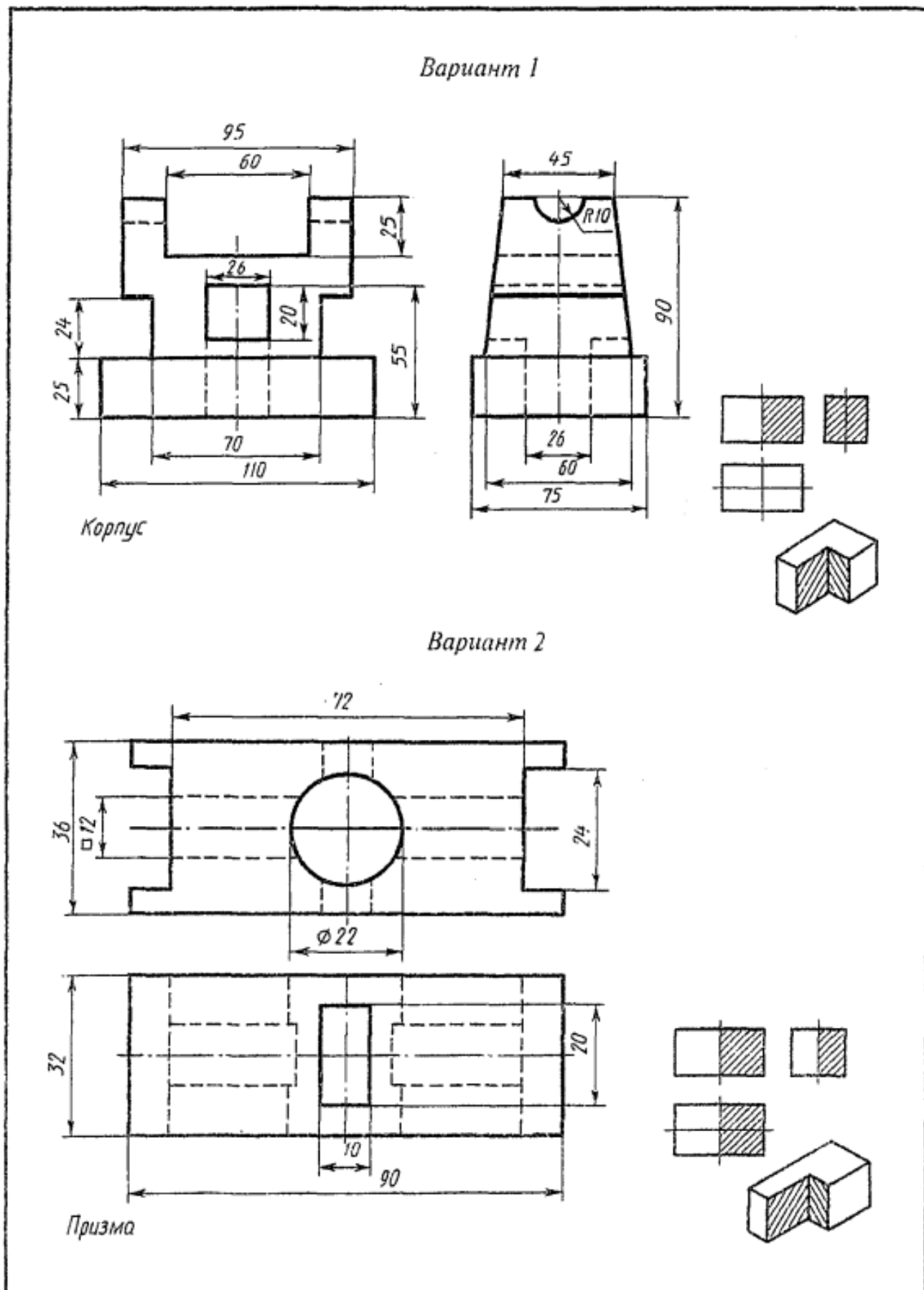
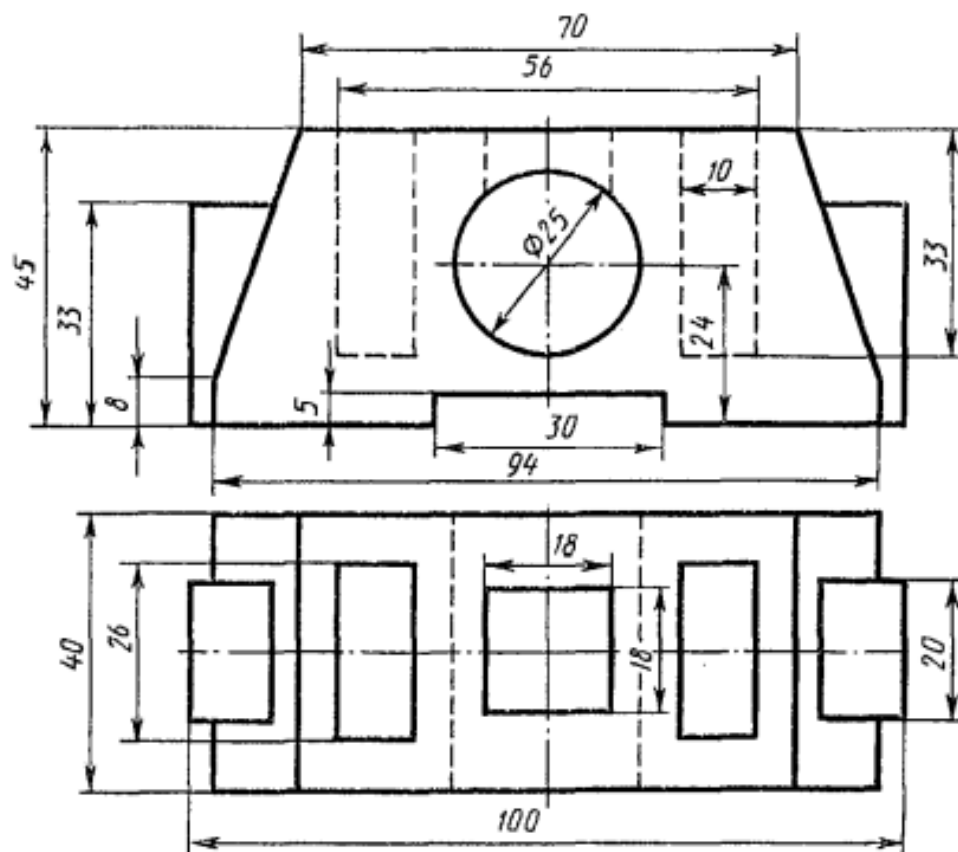


Задание №5. Построение 3 проекции по 2 заданным

По 2-ум заданным проекциям построить 3-ю с применением разрезов, указанных на схеме, а также изометрическую проекцию модели с вырезом передней четверти. Нанести размеры на чертеже.

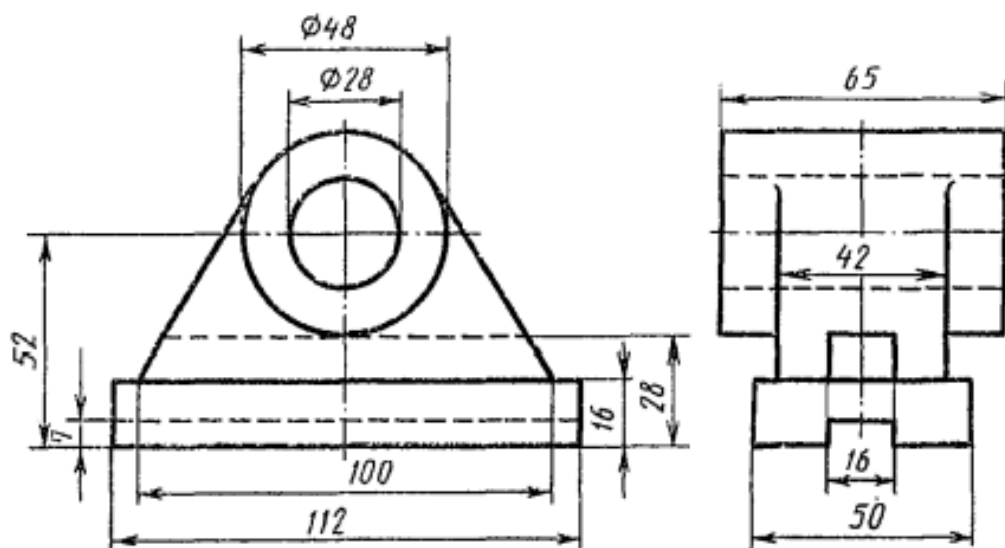


Вариант 3



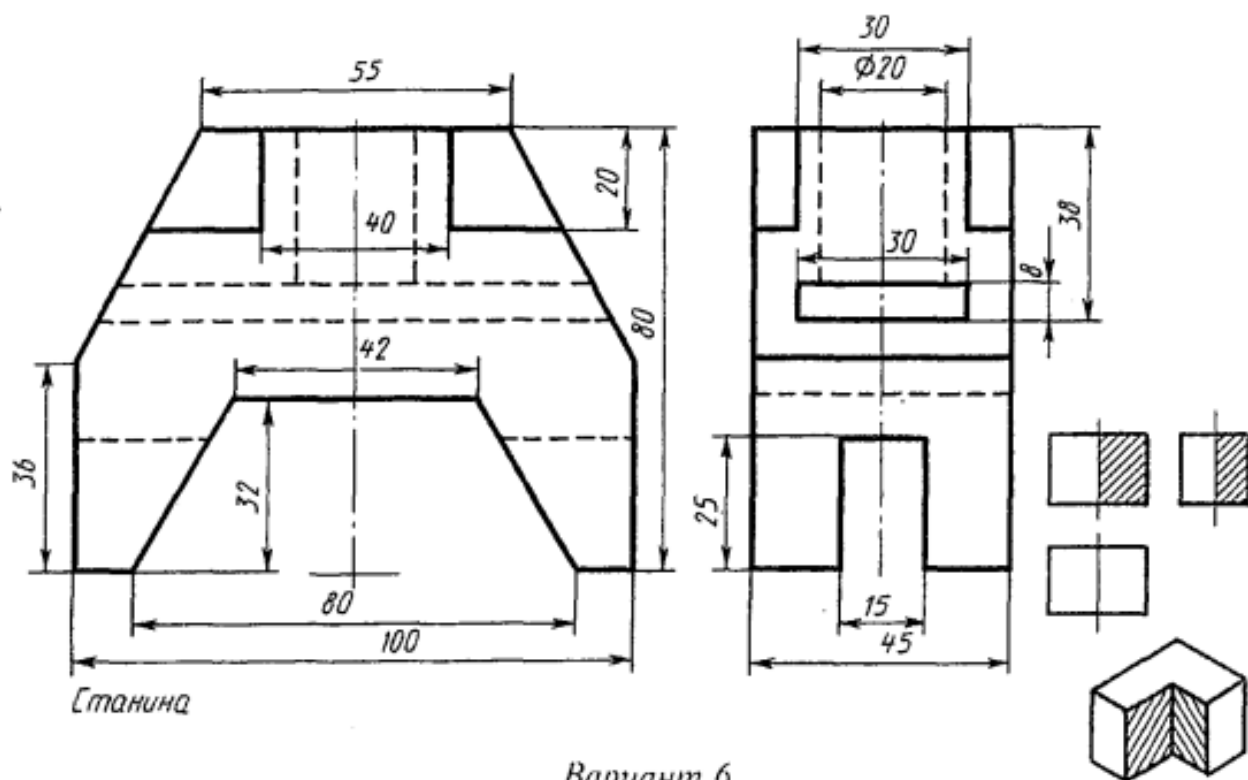
Корпус

Вариант 4

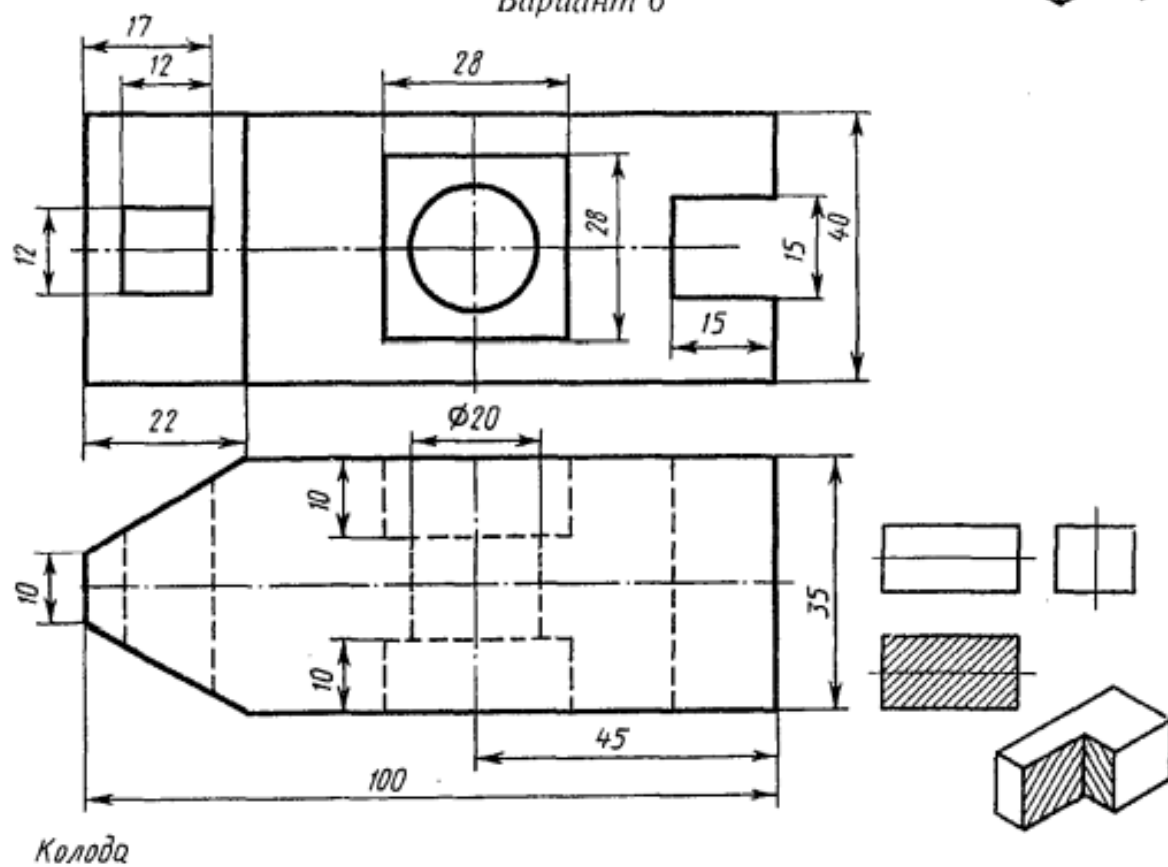


Подшипник

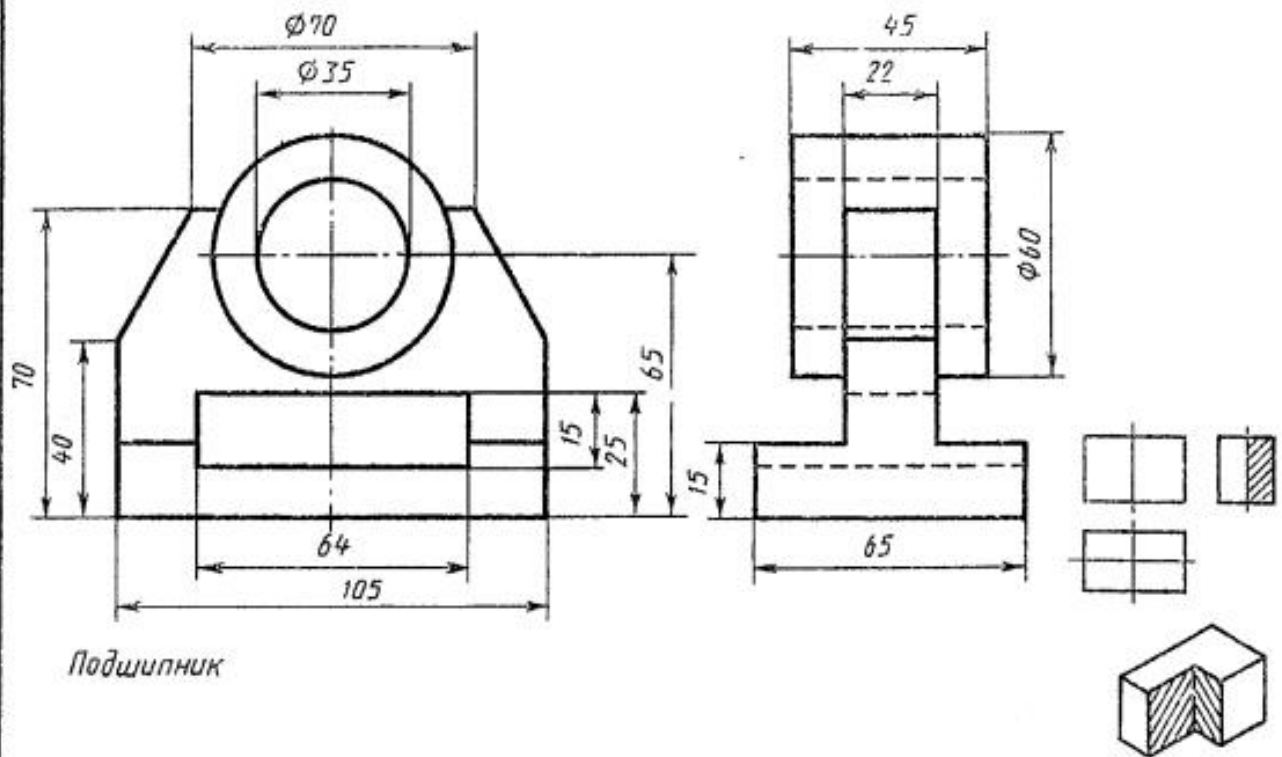
Вариант 5



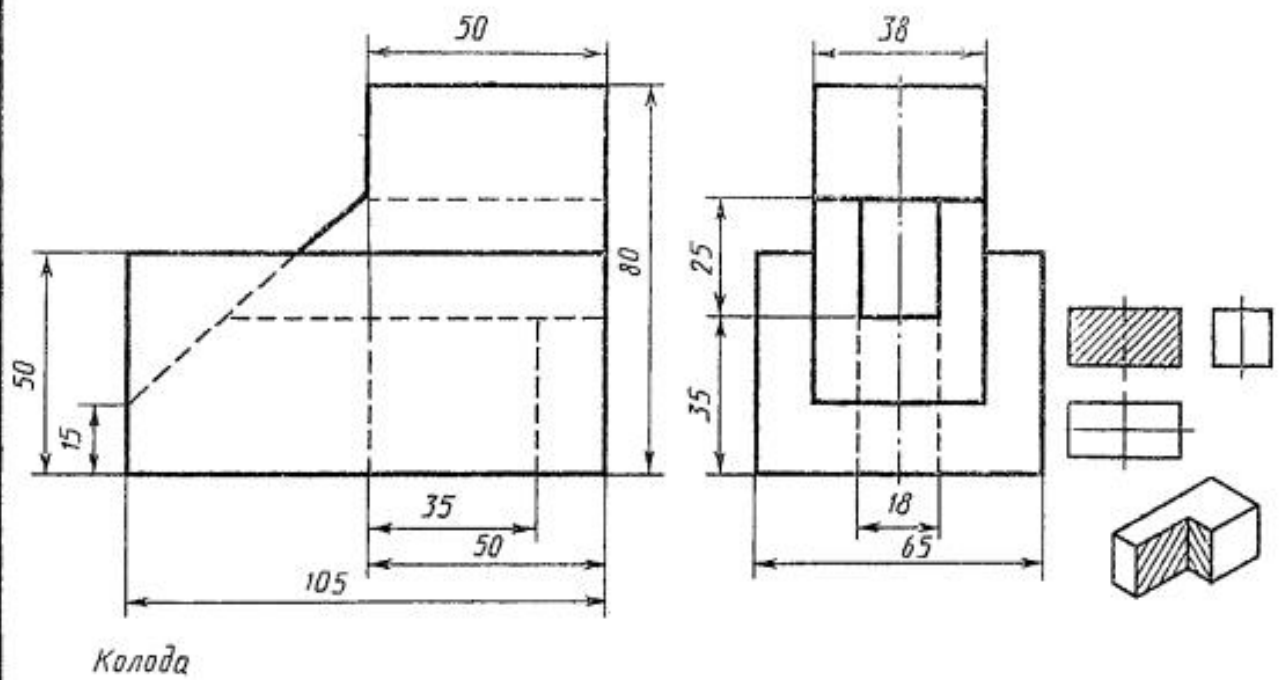
Вариант 6



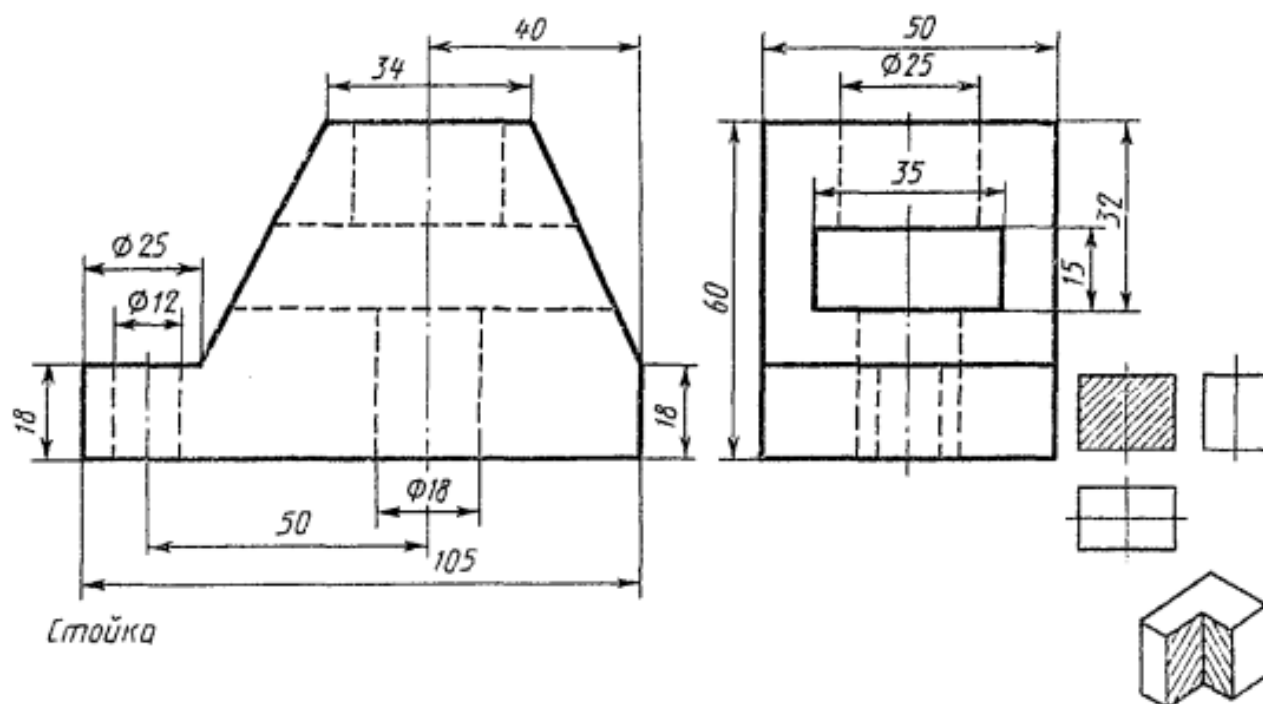
Вариант 7



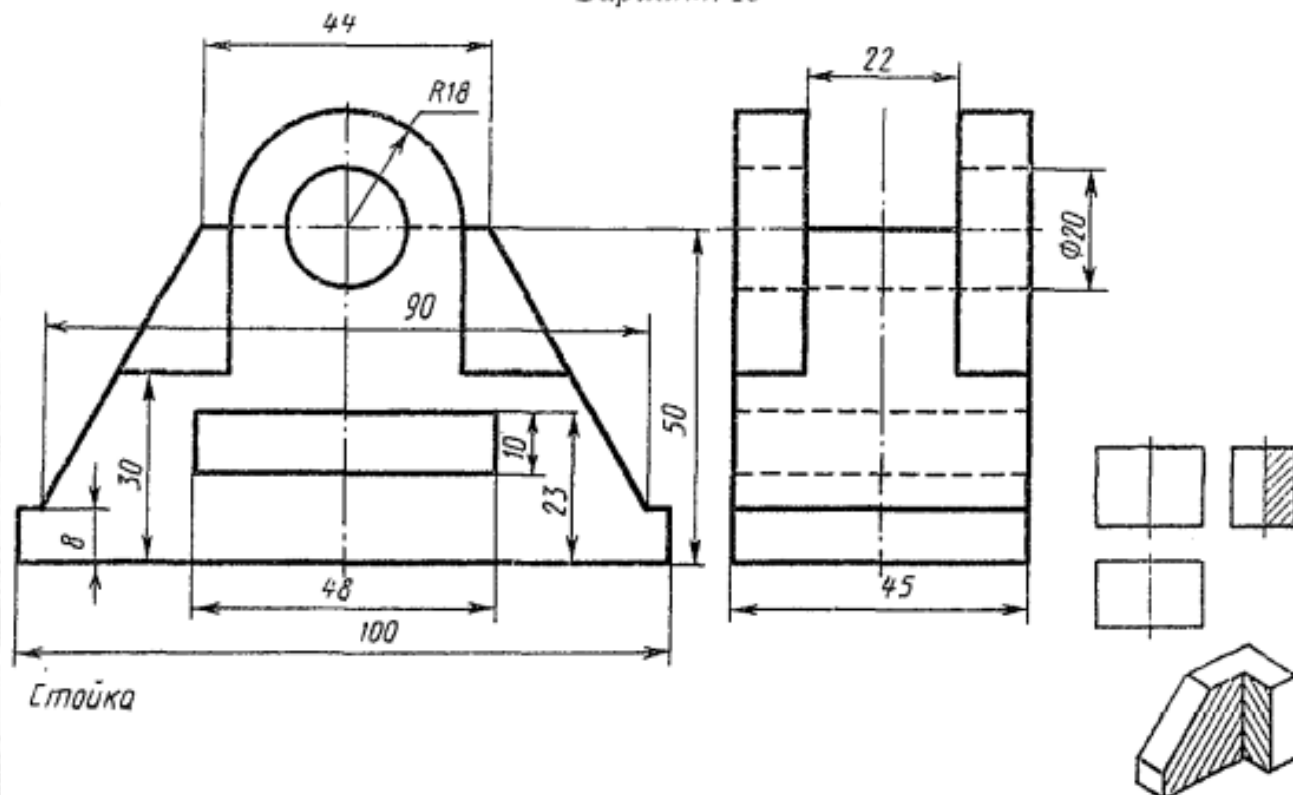
Вариант 8



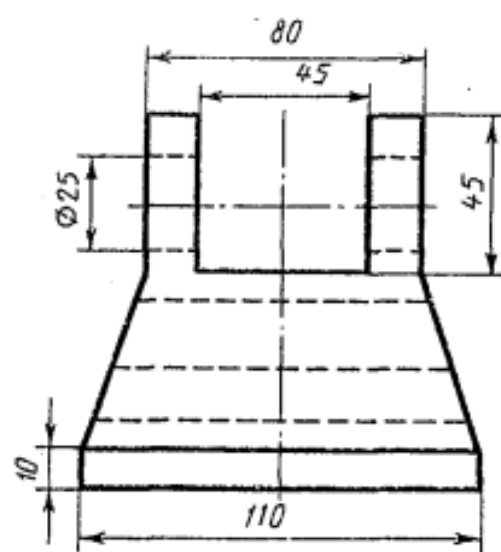
Вариант 9



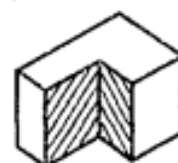
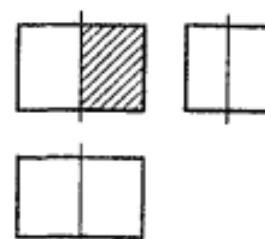
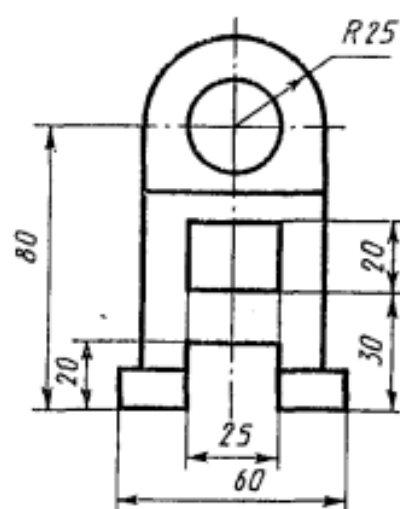
Вариант 10



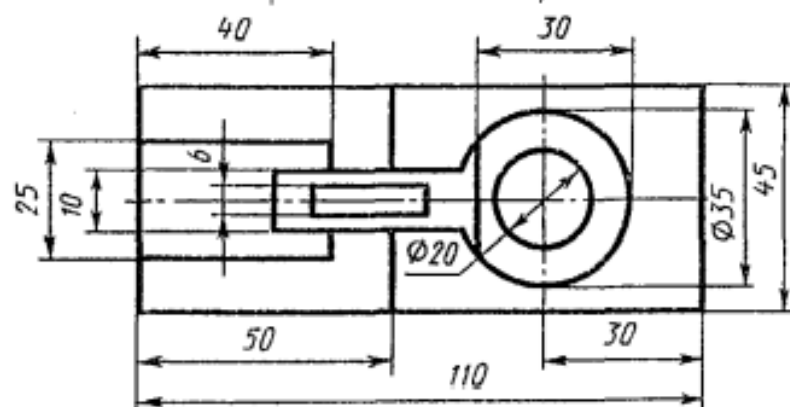
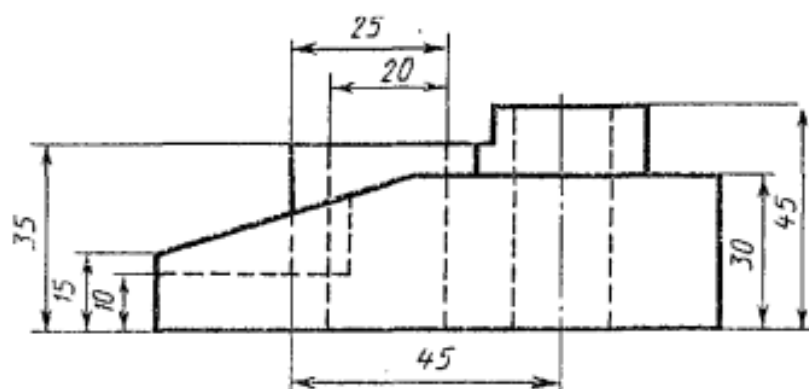
Вариант 11



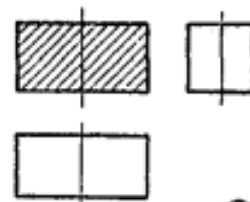
Опора



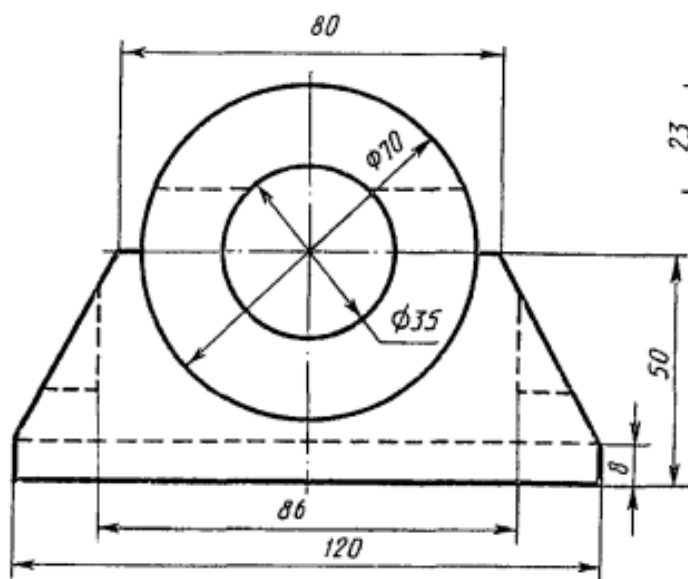
Вариант 12



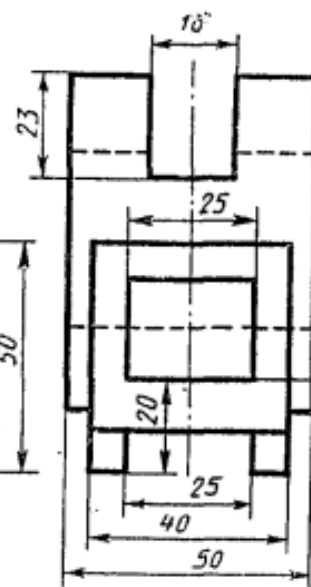
Вилка



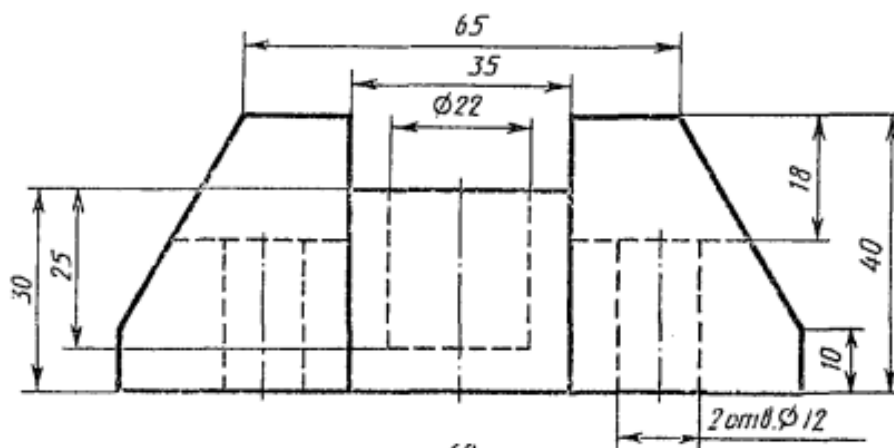
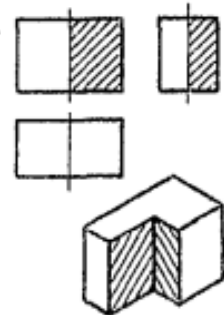
Вариант 13



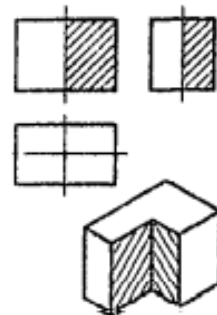
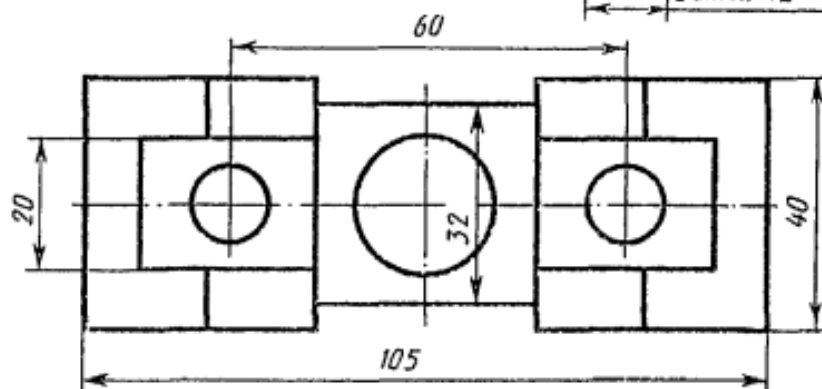
Подшипник



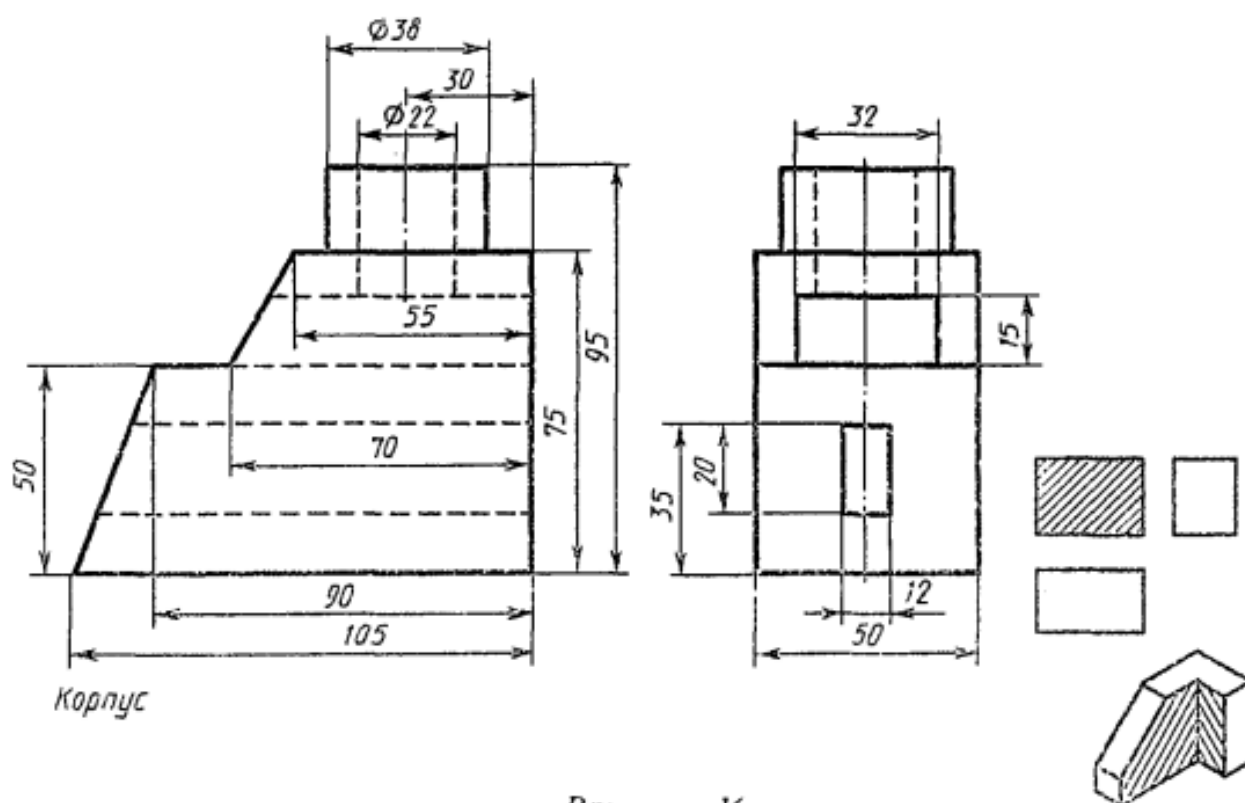
Вариант 14



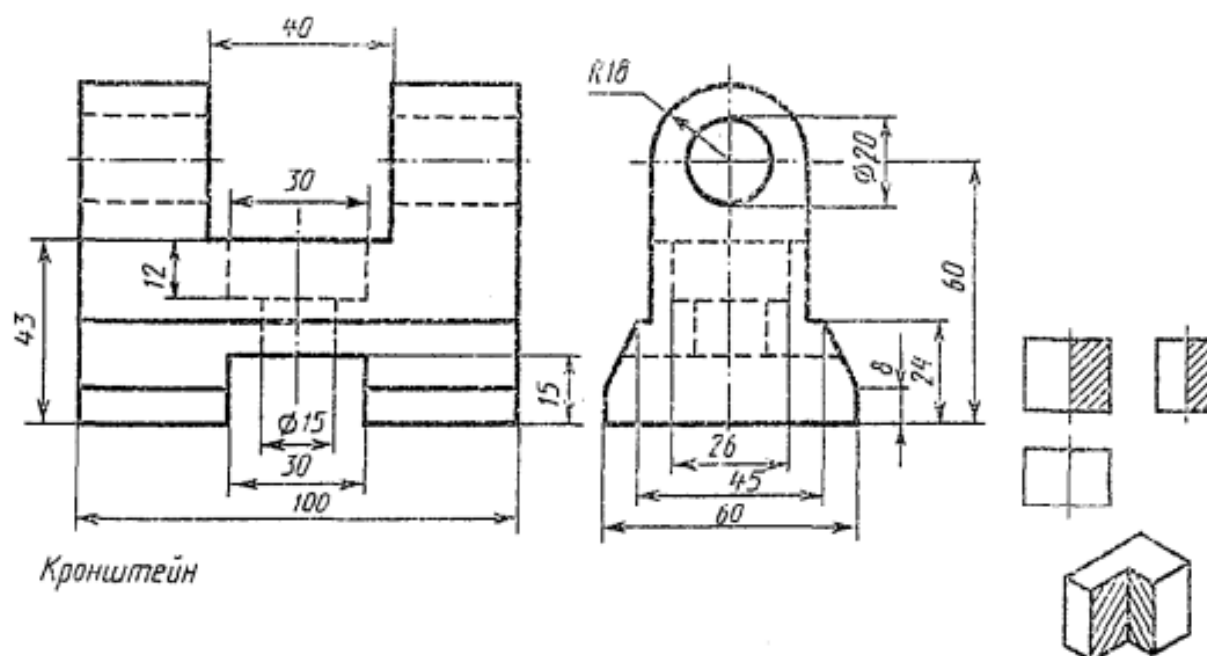
Пята



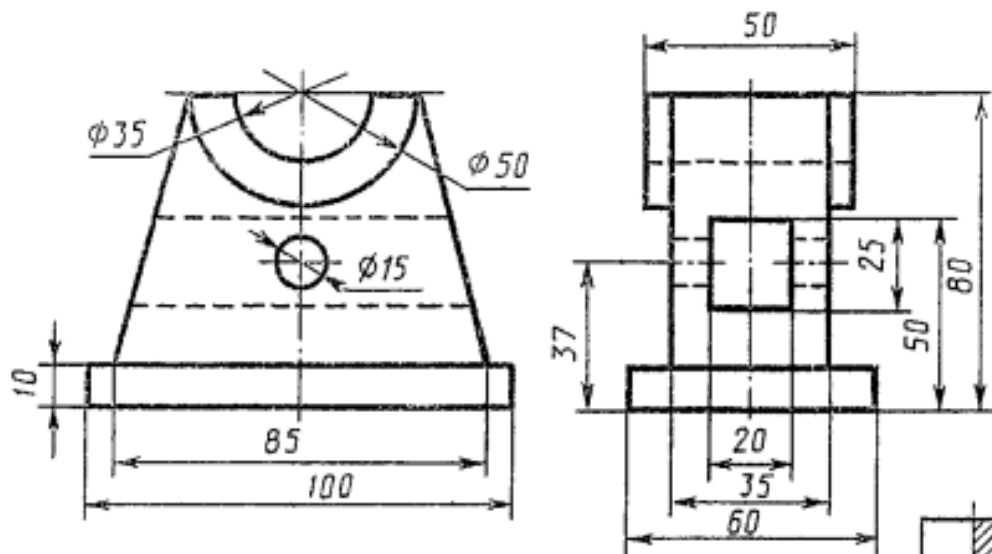
Вариант 15



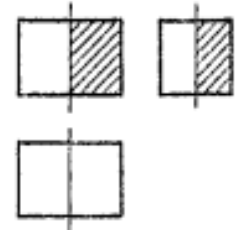
Вариант 16



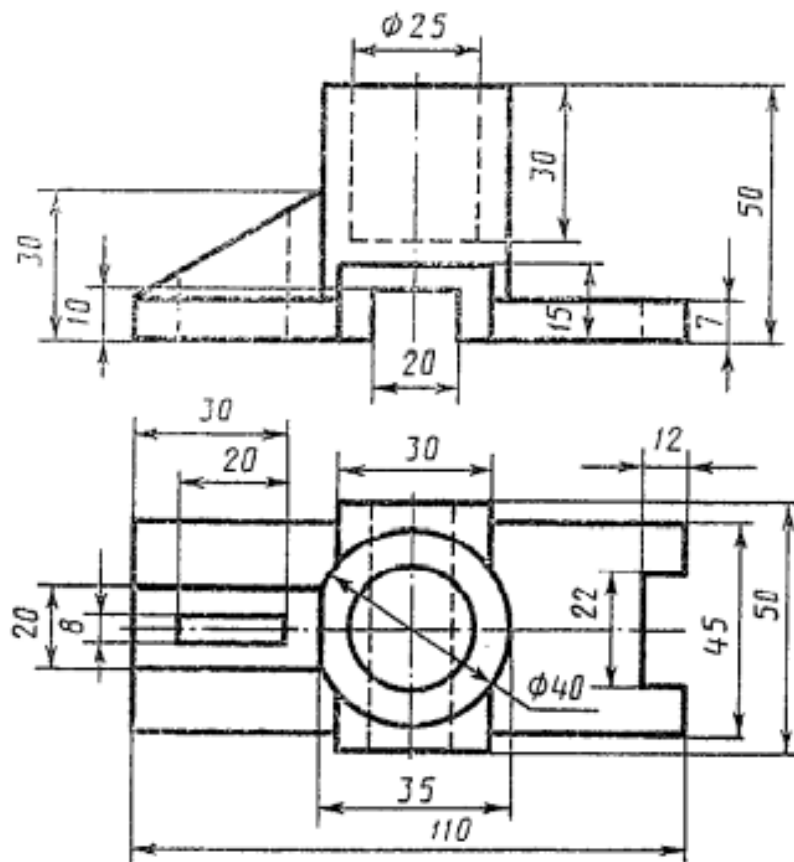
Вариант 17



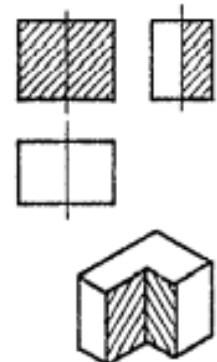
Стойка



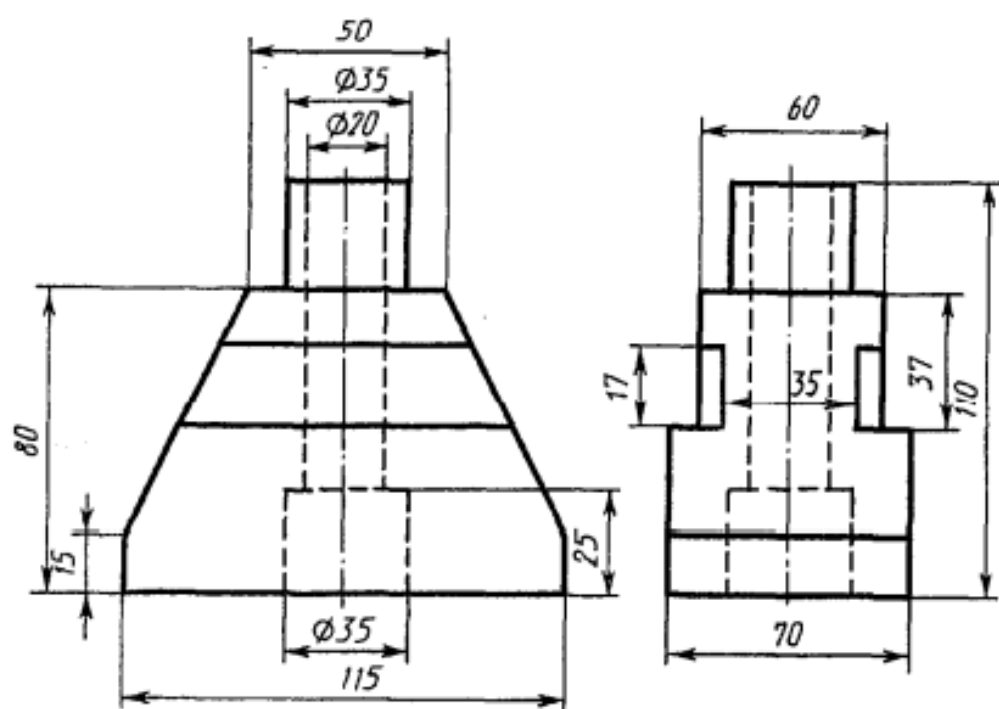
Вариант 18



Корпус

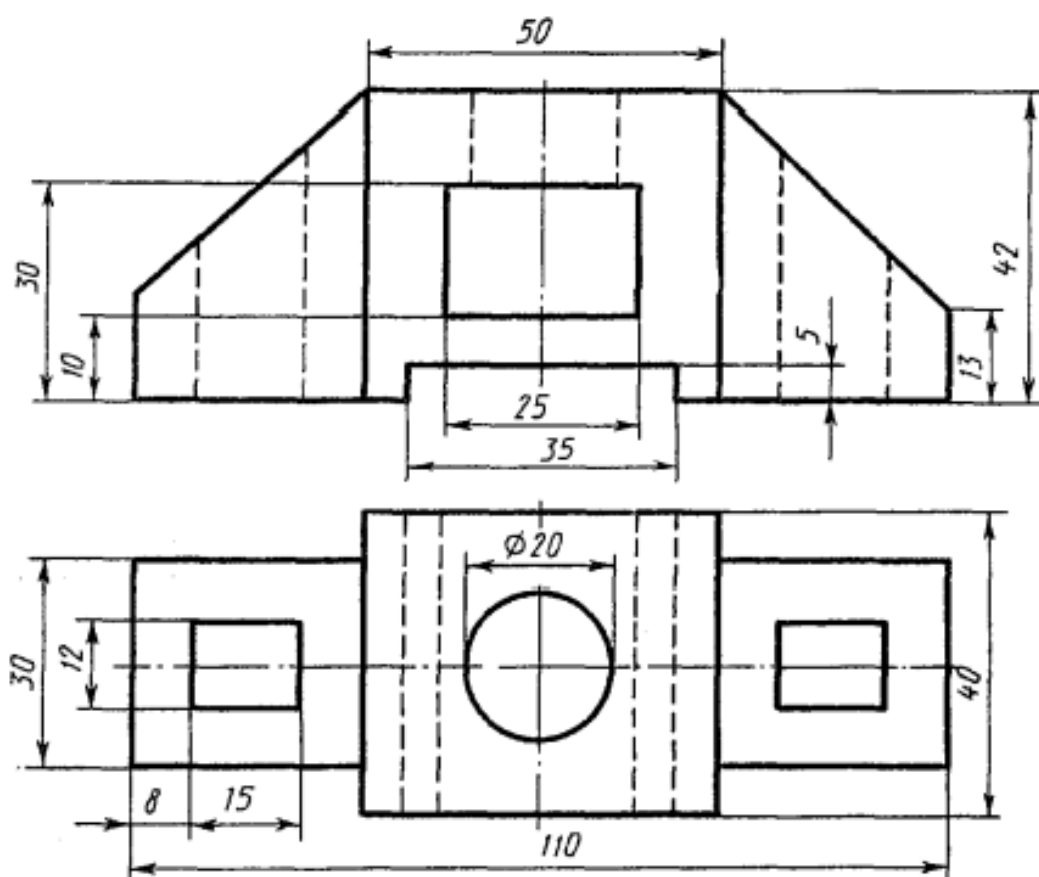


Вариант 19

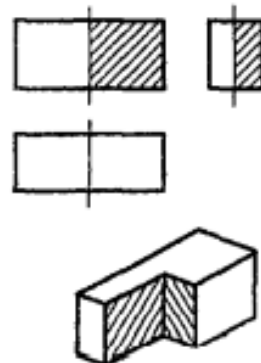
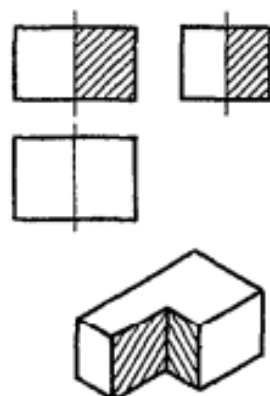


Станина

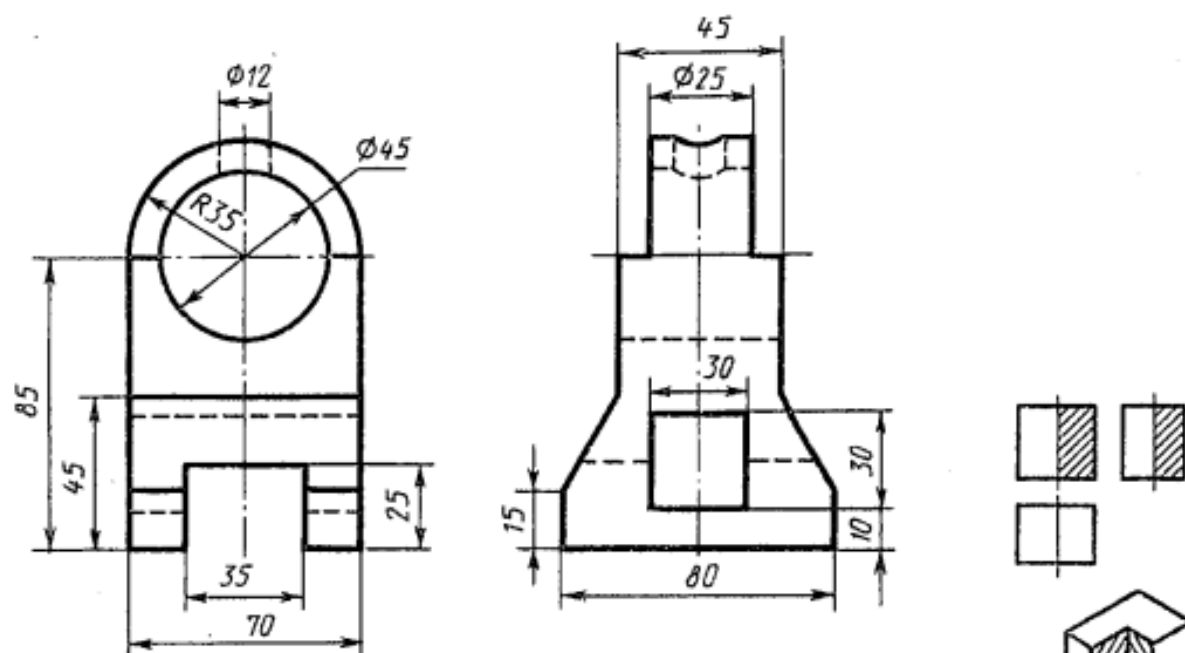
Вариант 20



Корпус

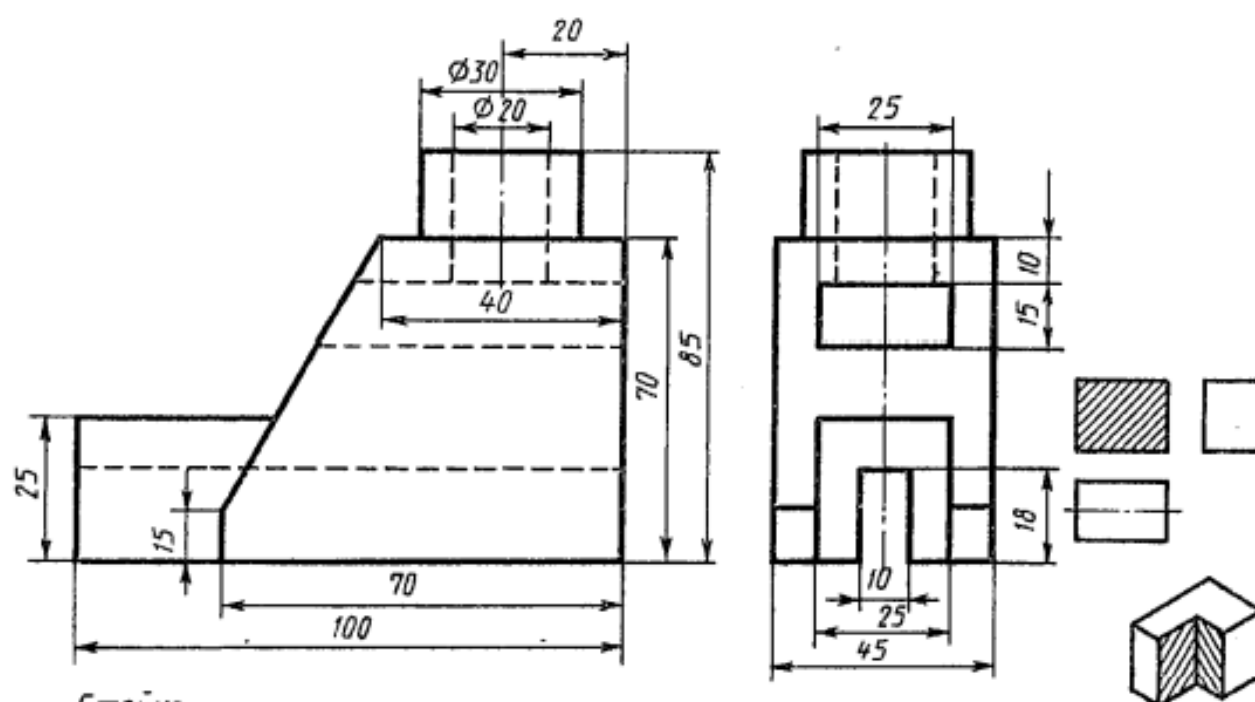


Вариант 21



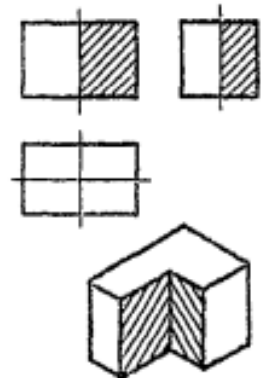
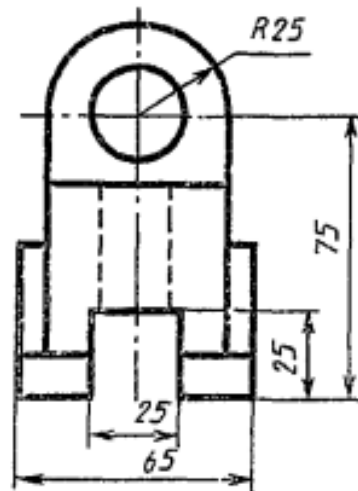
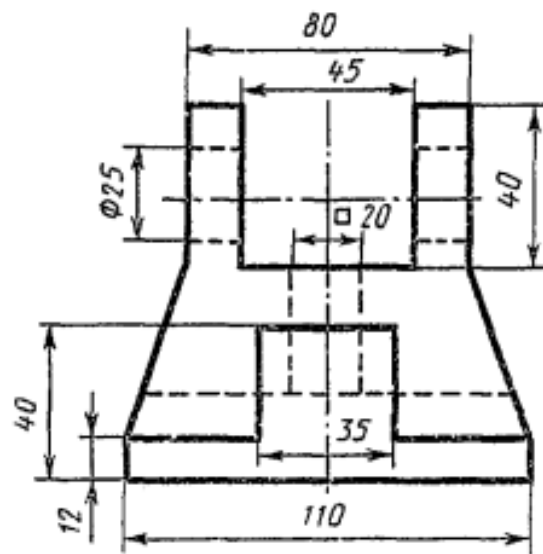
Кронштейн

Вариант 22



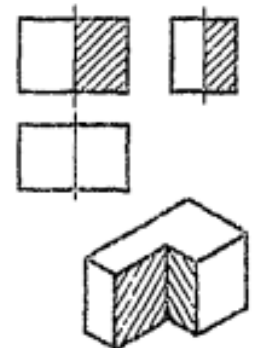
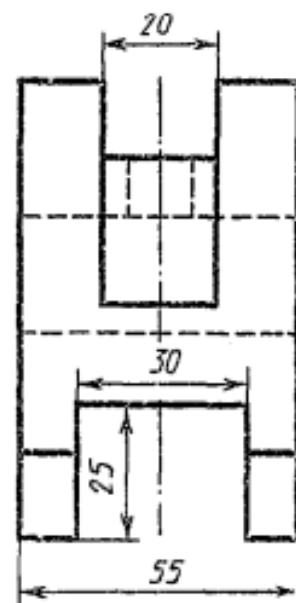
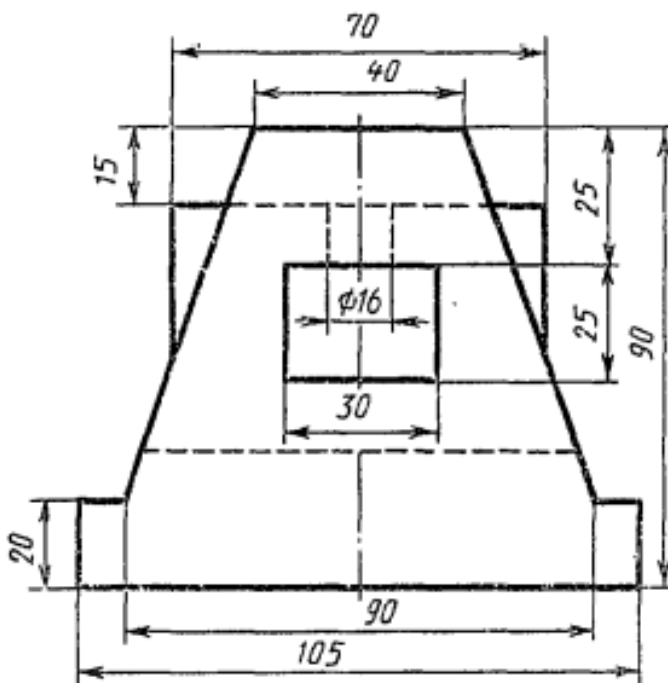
Стойка

Вариант 23



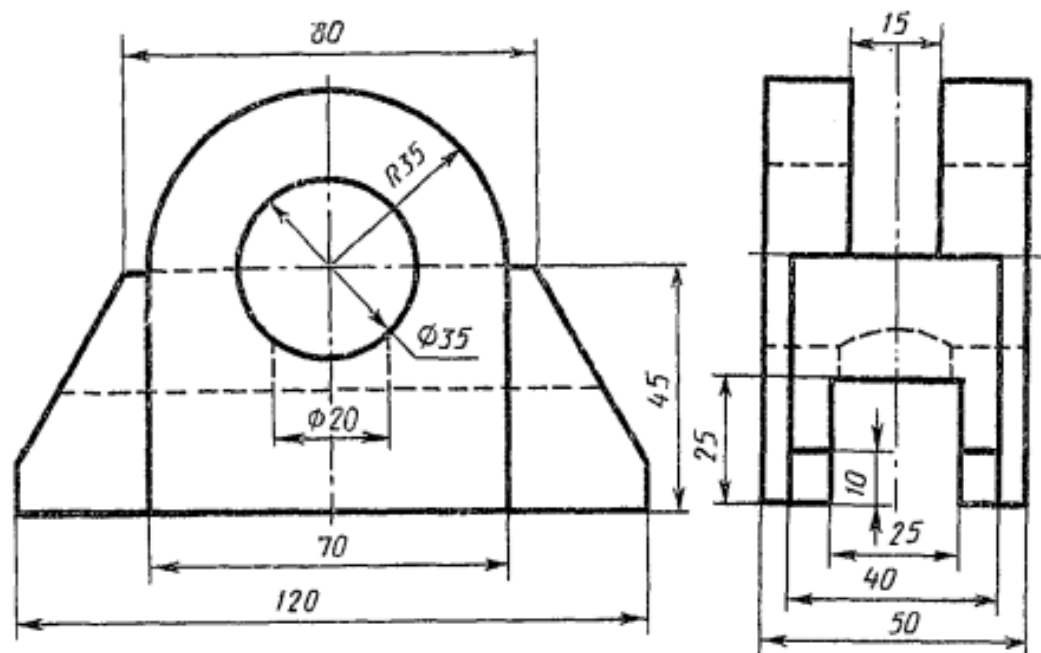
Кронштейн

Вариант 24



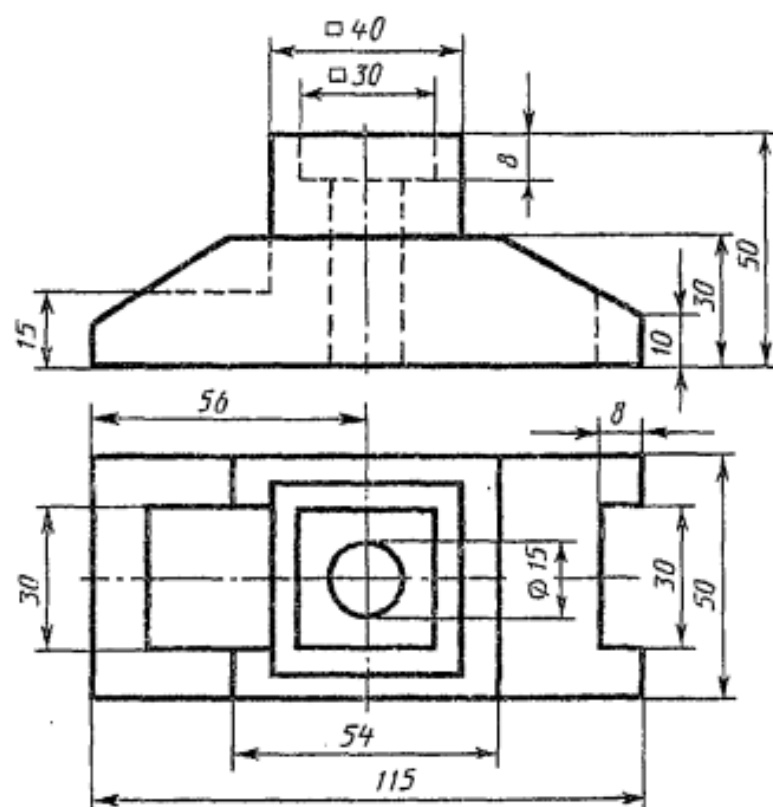
Станина

Вариант 25

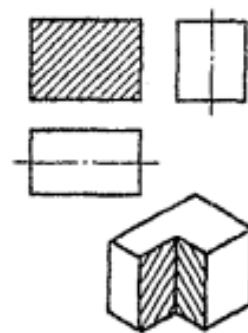
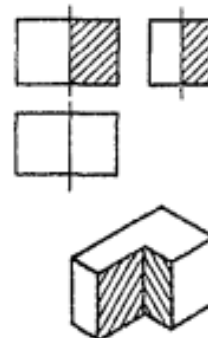


Опора

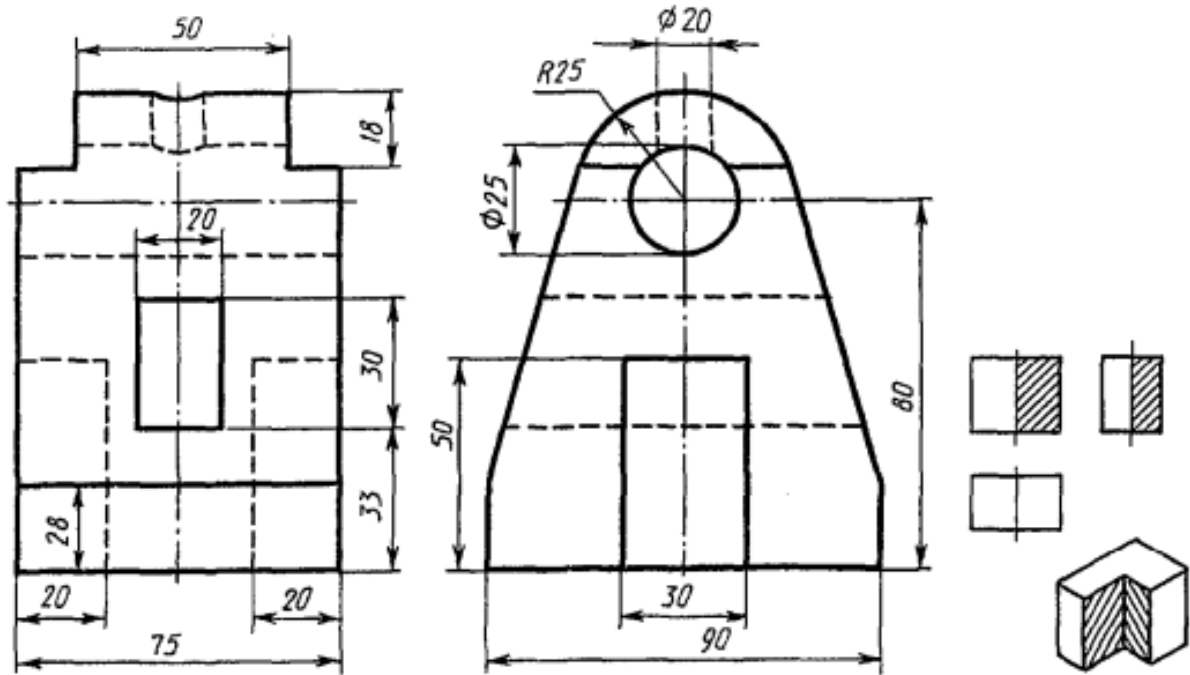
Вариант 26



Опора

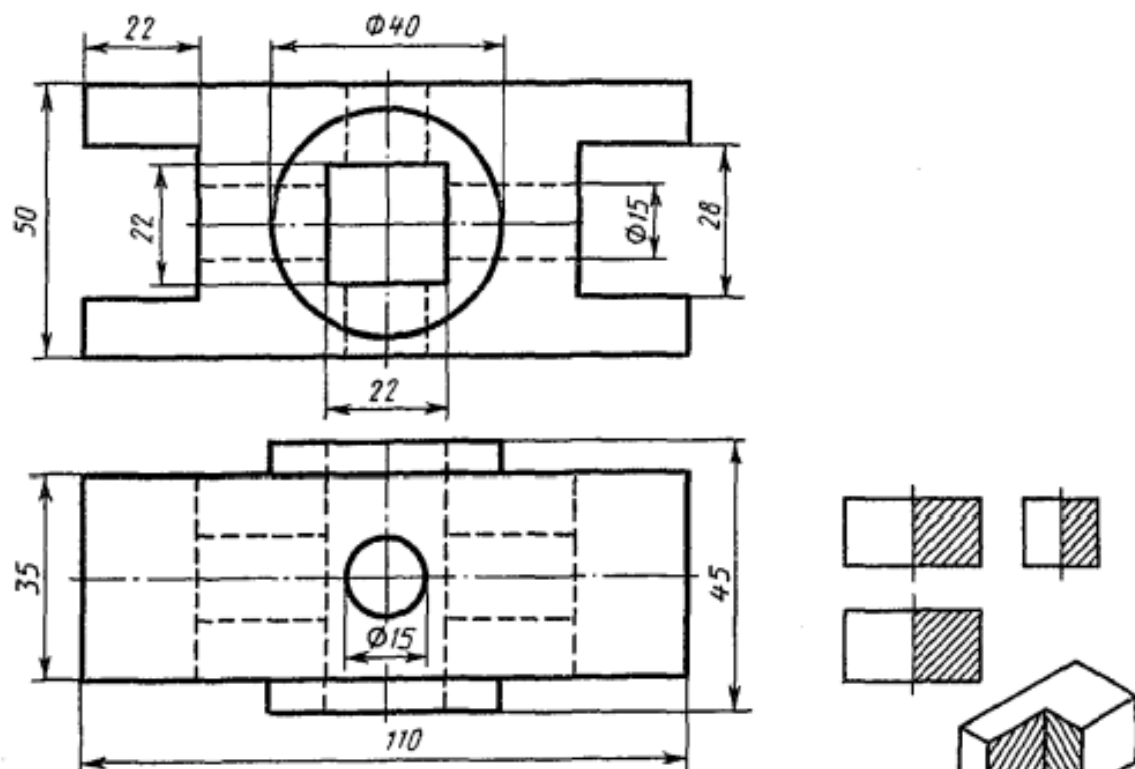


Вариант 27



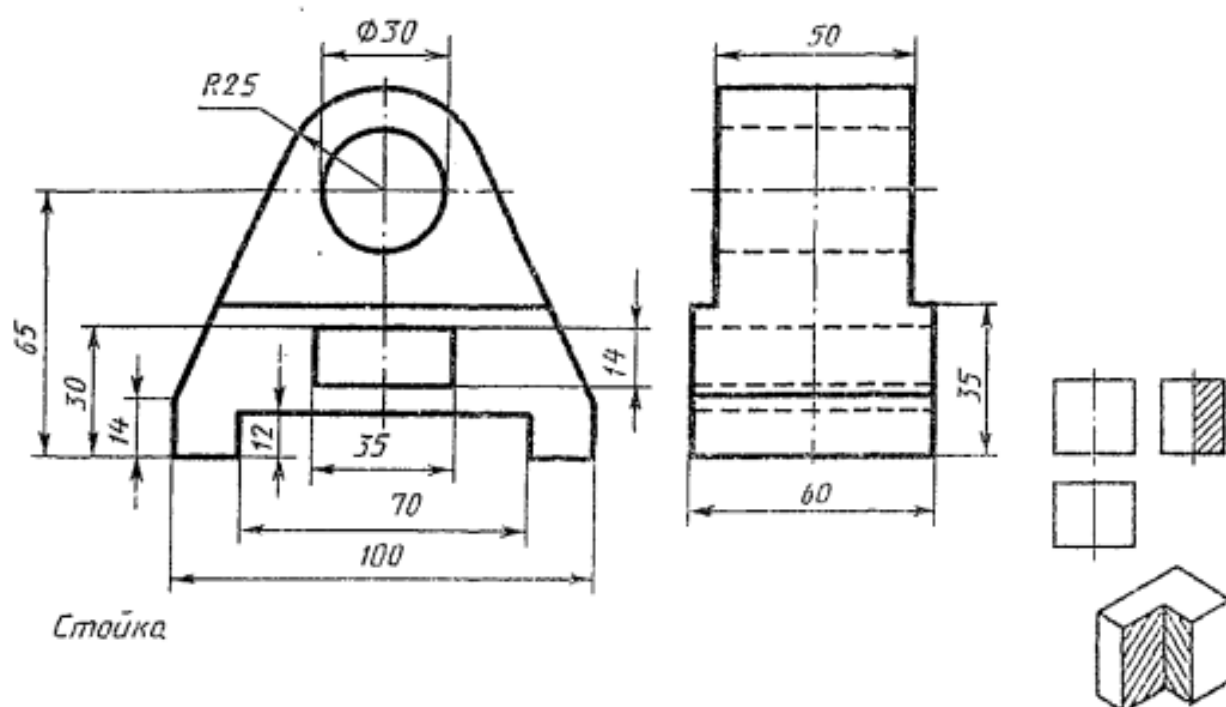
Стойка

Вариант 28



Корпус

Вариант 29



Вариант 30

